

Lower Basin Watershed Monitoring Locations



0 7 14 Miles

Area of Detail



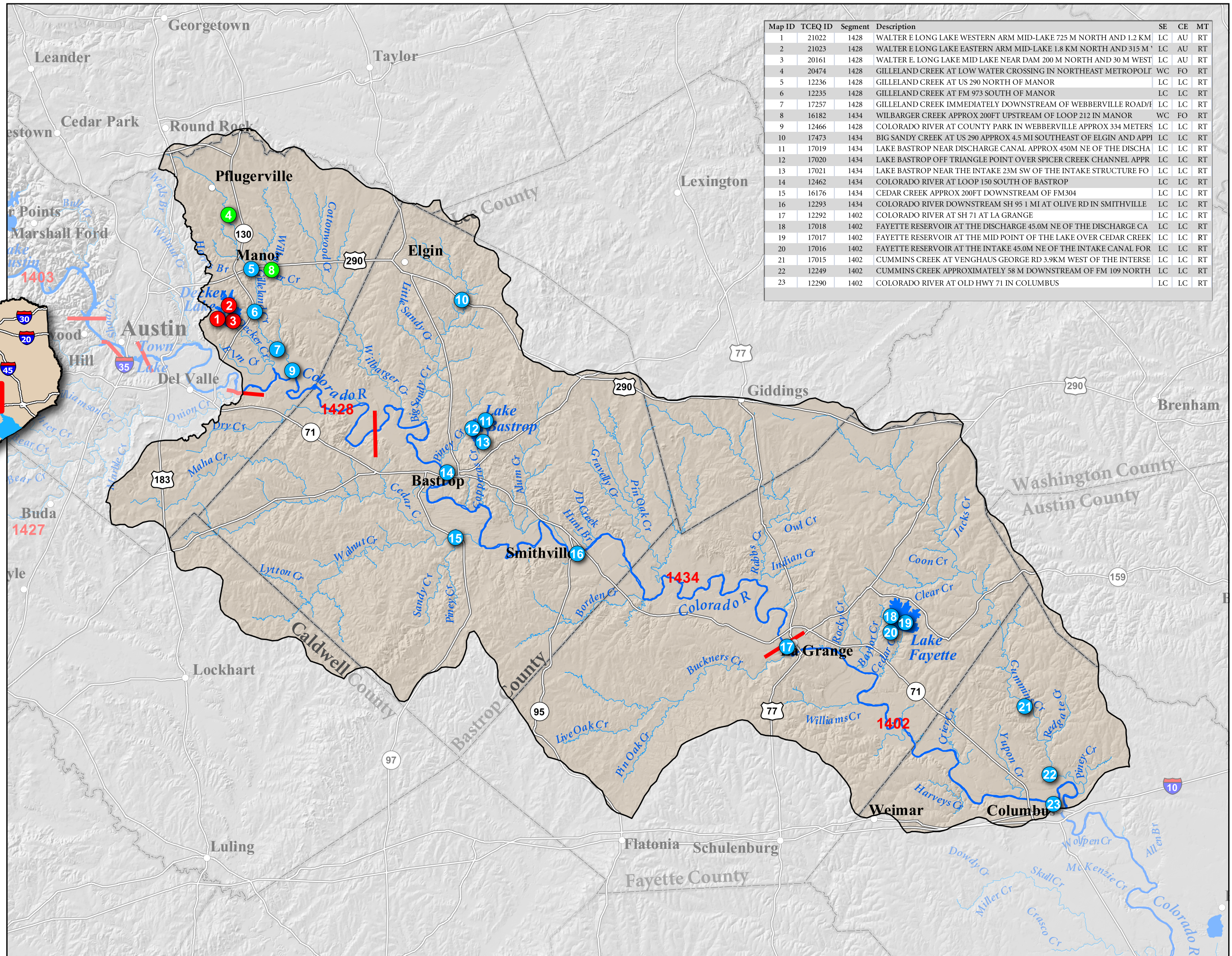
Legend

- Monitoring Agency**
- LCRA
 - TCEQ
 - COA
- Cities
- ⊕ Counties
- XXXX Stream Segments
- Stream Segment Boundaries
- Lower Basin Watershed
- Interstate Highways
- US Highways
- Major Roads
- Lakes
- Rivers
- Creeks

Source:
 Roads - TxDot
 Counties - TxDot
 Cities - TxDot
 Watersheds - EPA
 WaterBodies - EPA
 Segments - TCEQ

This map has been produced by the Lower Colorado River Authority for its own use. Accordingly, certain information, features, or details may have been emphasized over others or may have been left out. LCRA does not warrant the accuracy of this map, either as to scale, accuracy or completeness.

August 3, 2011



Map ID	TCEQ ID	Segment	Description	SE	CE	MT
1	21022	1428	WALTER E LONG LAKE WESTERN ARM MID-LAKE 725 M NORTH AND 1.2 KM	LC	AU	RT
2	21023	1428	WALTER E LONG LAKE EASTERN ARM MID-LAKE 1.8 KM NORTH AND 315 M	LC	AU	RT
3	20161	1428	WALTER E. LONG LAKE MID LAKE NEAR DAM 200 M NORTH AND 30 M WEST	LC	AU	RT
4	20474	1428	GILLELAND CREEK AT LOW WATER CROSSING IN NORTHEAST METROPOLI	WC	FO	RT
5	12236	1428	GILLELAND CREEK AT US 290 NORTH OF MANOR	LC	LC	RT
6	12235	1428	GILLELAND CREEK AT FM 973 SOUTH OF MANOR	LC	LC	RT
7	17257	1428	GILLELAND CREEK IMMEDIATELY DOWNSTREAM OF WEBBERVILLE ROAD/I	LC	LC	RT
8	16182	1434	WILBARGER CREEK APPROX 200FT UPSTREAM OF LOOP 212 IN MANOR	WC	FO	RT
9	12466	1428	COLORADO RIVER AT COUNTY PARK IN WEBBERVILLE APPROX 334 METERS	LC	LC	RT
10	17473	1434	BIG SANDY CREEK AT US 290 APPROX 4.5 MI SOUTHEAST OF ELGIN AND APPI	LC	LC	RT
11	17019	1434	LAKE BASTROP NEAR DISCHARGE CANAL APPROX 450M NE OF THE DISCHA	LC	LC	RT
12	17020	1434	LAKE BASTROP OFF TRIANGLE POINT OVER SPICER CREEK CHANNEL APPR	LC	LC	RT
13	17021	1434	LAKE BASTROP NEAR THE INTAKE 23M SW OF THE INTAKE STRUCTURE FO	LC	LC	RT
14	12462	1434	COLORADO RIVER AT LOOP 150 SOUTH OF BASTROP	LC	LC	RT
15	16176	1434	CEDAR CREEK APPROX 200FT DOWNSTREAM OF FM304	LC	LC	RT
16	12293	1434	COLORADO RIVER DOWNSTREAM SH 95 1 MI AT OLIVE RD IN SMITHVILLE	LC	LC	RT
17	12292	1402	COLORADO RIVER AT SH 71 AT LA GRANGE	LC	LC	RT
18	17018	1402	FAYETTE RESERVOIR AT THE DISCHARGE 45.0M NE OF THE DISCHARGE CA	LC	LC	RT
19	17017	1402	FAYETTE RESERVOIR AT THE MID POINT OF THE LAKE OVER CEDAR CREEK	LC	LC	RT
20	17016	1402	FAYETTE RESERVOIR AT THE INTAKE 45.0M NE OF THE INTAKE CANAL FOR	LC	LC	RT
21	17015	1402	CUMMINS CREEK AT VENGHAUS GEORGE RD 3.9KM WEST OF THE INTERSE	LC	LC	RT
22	12249	1402	CUMMINS CREEK APPROXIMATELY 58 M DOWNSTREAM OF FM 109 NORTH	LC	LC	RT
23	12290	1402	COLORADO RIVER AT OLD HWY 71 IN COLUMBUS	LC	LC	RT