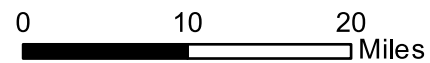
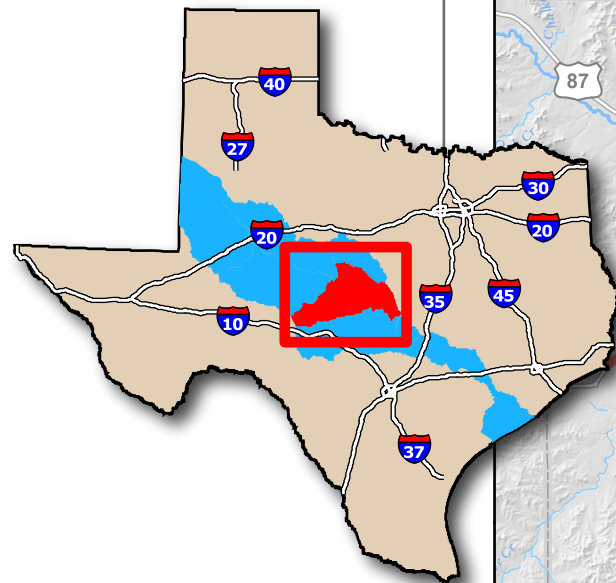


Lake Buchanan Watershed Monitoring Locations



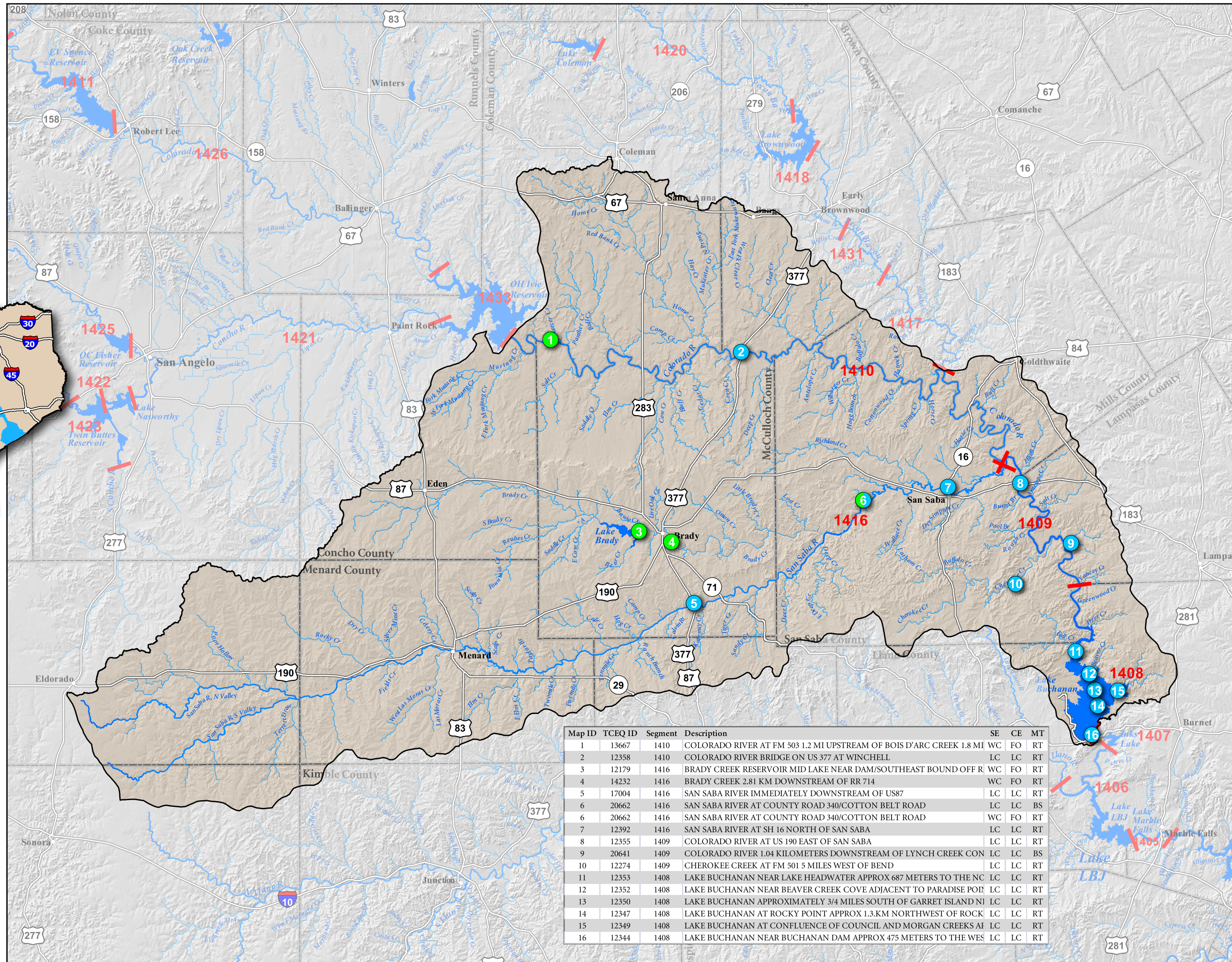
Area of Detail



Legend

- Monitoring Agency**
- LCRA
 - TCEQ
- Geographic Features**
- Cities
 - Counties
 - XXXX Stream Segments
 - Stream Segment Boundaries
 - Lake Buchanan Watershed
 - Interstate Highways
 - US Highways
 - Major Roads
 - Lakes
 - Rivers
 - Creeks

Source:
 Roads - TxDot
 Counties - TxDot
 Cities - TxDot
 Watersheds - EPA
 WaterBodies - EPA
 Segments - TCEQ



Map ID	TCEQ ID	Segment	Description	SE	CE	MT
1	13667	1410	COLORADO RIVER AT FM 503 1.2 MI UPSTREAM OF BOIS D'ARC CREEK 1.8 MI	WC	FO	RT
2	12358	1410	COLORADO RIVER BRIDGE ON US 377 AT WINCHELL	LC	LC	RT
3	12179	1416	BRADY CREEK RESERVOIR MID LAKE NEAR DAM/SOUTHEAST BOUND OFF R	WC	FO	RT
4	14232	1416	BRADY CREEK 2.81 KM DOWNSTREAM OF RR 714	WC	FO	RT
5	17004	1416	SAN SABA RIVER IMMEDIATELY DOWNSTREAM OF US87	LC	LC	RT
6	20662	1416	SAN SABA RIVER AT COUNTY ROAD 340/COTTON BELT ROAD	WC	FO	RT
7	12392	1416	SAN SABA RIVER AT SH 16 NORTH OF SAN SABA	LC	LC	RT
8	12355	1409	COLORADO RIVER AT US 190 EAST OF SAN SABA	LC	LC	RT
9	20641	1409	COLORADO RIVER 1.04 KILOMETERS DOWNSTREAM OF LYNCH CREEK CON	LC	LC	BS
10	12274	1409	CHEROKEE CREEK AT FM 501 5 MILES WEST OF BEND	LC	LC	RT
11	12353	1408	LAKE BUCHANAN NEAR LAKE HEADWATER APPROX 687 METERS TO THE NC	LC	LC	RT
12	12352	1408	LAKE BUCHANAN NEAR BEAVER CREEK COVE ADJACENT TO PARADISE POI	LC	LC	RT
13	12350	1408	LAKE BUCHANAN APPROXIMATELY 3/4 MILES SOUTH OF GARRET ISLAND NJ	LC	LC	RT
14	12347	1408	LAKE BUCHANAN AT ROCKY POINT APPROX 1.3.KM NORTHWEST OF ROCK	LC	LC	RT
15	12349	1408	LAKE BUCHANAN AT CONFLUENCE OF COUNCIL AND MORGAN CREEKS AF	LC	LC	RT
16	12344	1408	LAKE BUCHANAN NEAR BUCHANAN DAM APPROX 475 METERS TO THE WES	LC	LC	RT

This map has been produced by the Lower Colorado River Authority for its own use. Accordingly, certain information, features, or details may have been emphasized over others or may have been left out. LCRA does not warrant the accuracy of this map, either as to scale, accuracy or completeness.