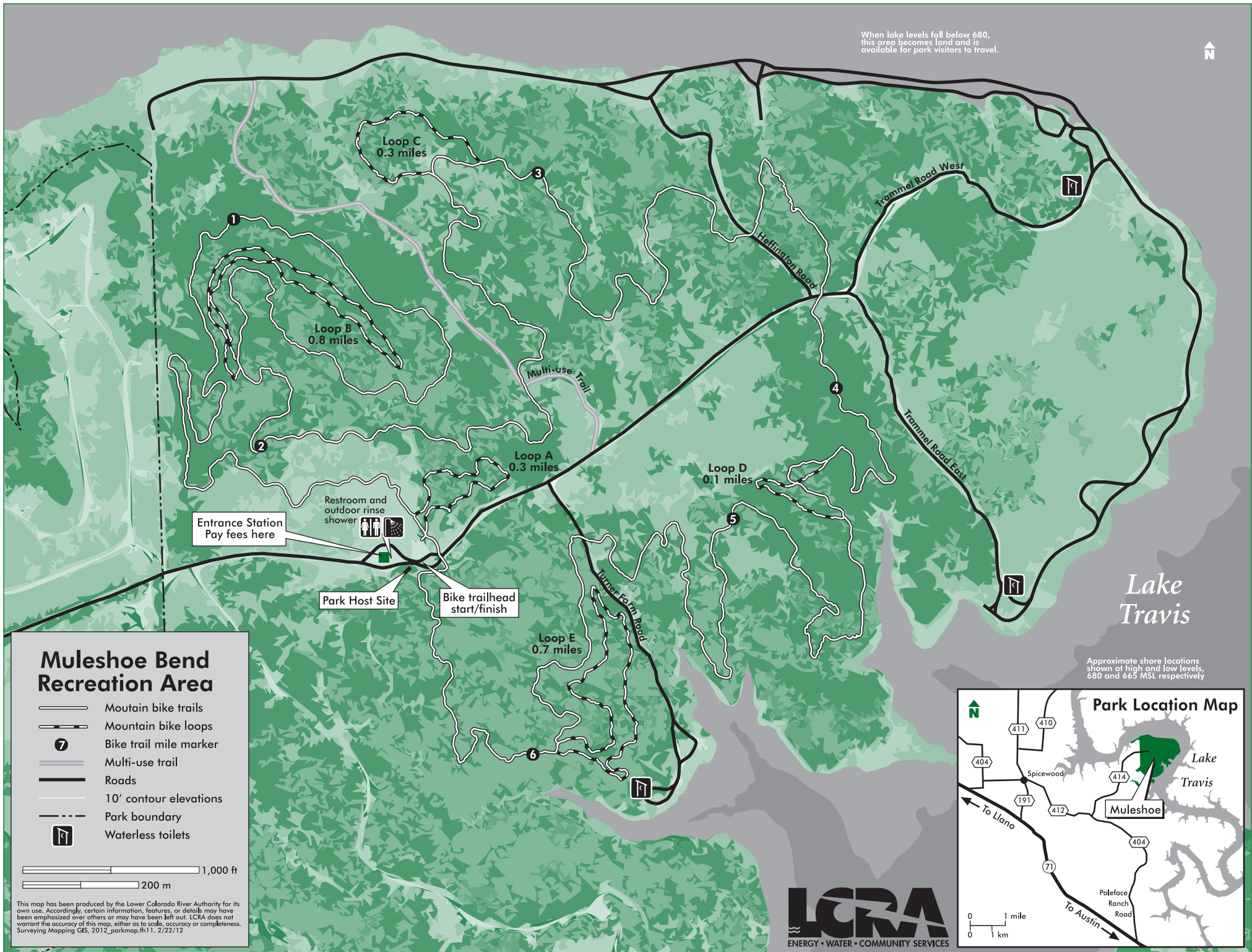


When lake levels fall below 680,  
this area becomes land and is  
available for park visitors to travel.



Lake  
Travis

Approximate shore locations  
shown at high and low levels,  
680 and 665 MSL respectively

## Muleshoe Bend Recreation Area

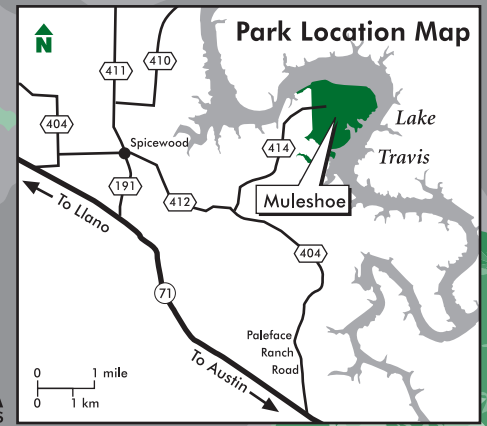
- Mountain bike trails
- Mountain bike loops
- Bike trail mile marker
- Multi-use trail
- Roads
- 10' contour elevations
- Park boundary
- Waterless toilets

1,000 ft  
200 m

This map has been produced by the Lower Colorado River Authority for its own use. Accordingly, certain information, features, or details may have been emphasized over others or may have been left out. LCRA does not warrant the accuracy of this map, either as to scale, accuracy or completeness. Surveying Mapping GIS, 2012\_parkmap.fh11. 2/22/12



### Park Location Map



0 1 mile  
0 1 km