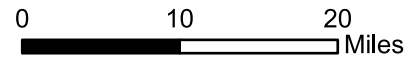
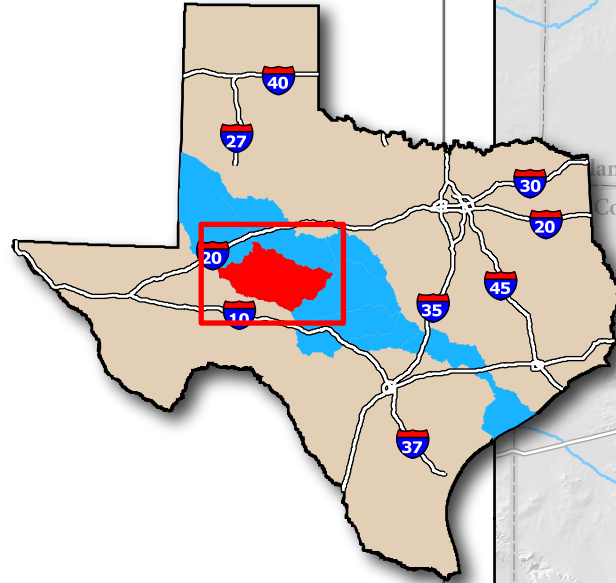


Concho River Watershed Monitoring Locations



Area of Detail



Legend

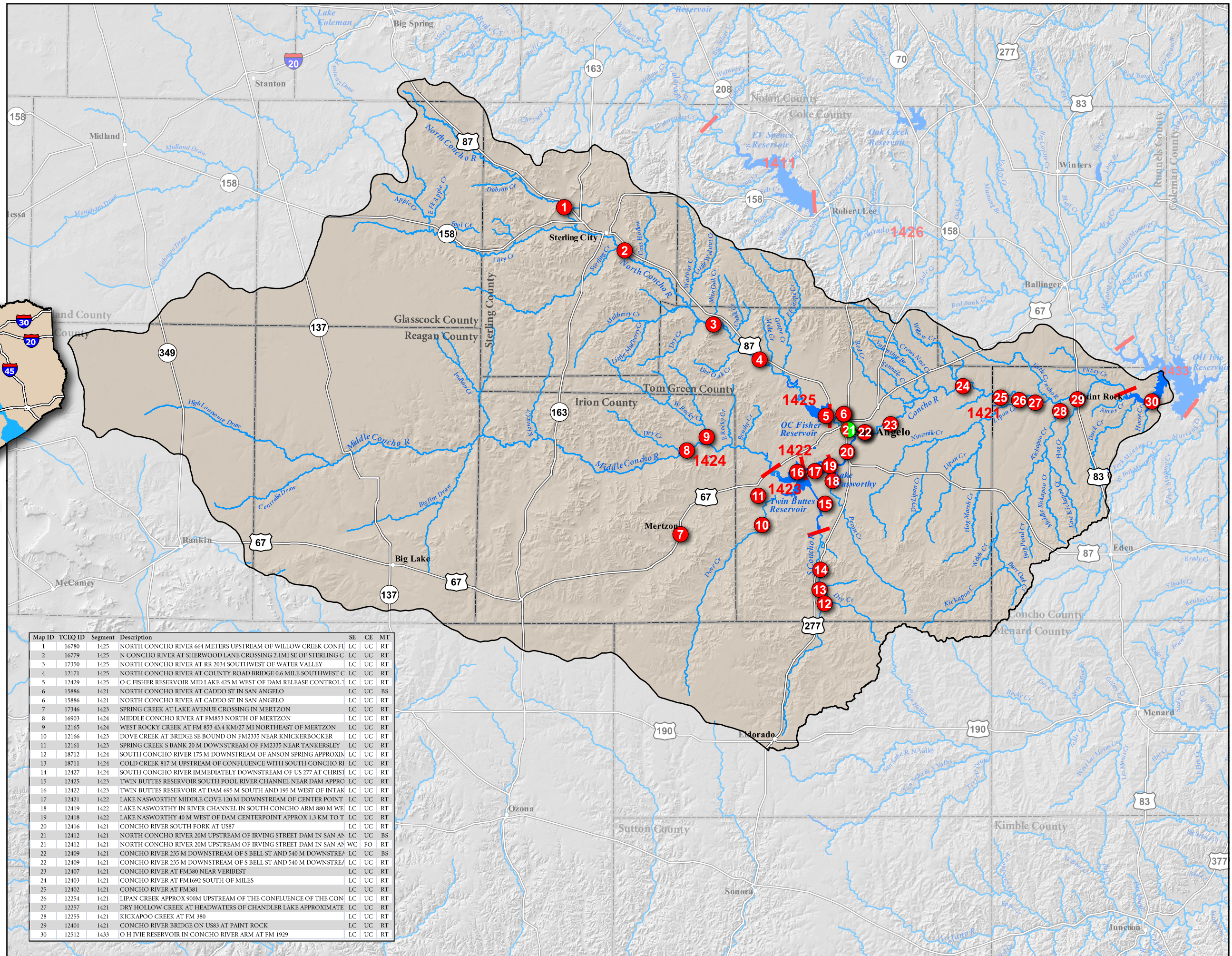
- Monitoring Agency**
- UCRA
 - TCEQ
 - Cities
 - Counties
 - XXXX Stream Segments
 - Stream Segment Boundaries
 - Concho River Watershed
 - Interstate Highways
 - US Highways
 - Major Roads
 - Lakes
 - Rivers
 - Creeks

Source:
 Roads - TxDot
 Counties - TxDot
 Cities - TxDot
 Watersheds - EPA
 WaterBodies - EPA
 Segments - TCEQ



This map has been produced by the Lower Colorado River Authority for its own use. Accordingly, certain information, features, or details may have been emphasized over others or may have been left out. LCRA does not warrant the accuracy of this map, either as to scale, accuracy or completeness.

August 2, 2011



Map ID	TCEQ ID	Segment	Description	SE	CE	MT
1	16780	1425	NORTH CONCHO RIVER 664 METERS UPSTREAM OF WILLOW CREEK CONFLUENCE	LC	UC	RT
2	16779	1425	N CONCHO RIVER AT SHERWOOD LANE CROSSING 2.1MI SE OF STERLING CITY	LC	UC	RT
3	17350	1425	NORTH CONCHO RIVER AT RR 2034 SOUTHWEST OF WATER VALLEY	LC	UC	RT
4	12171	1425	NORTH CONCHO RIVER AT COUNTY ROAD BRIDGE 0.6 MILE SOUTHWEST OF STERLING CITY	LC	UC	RT
5	12429	1425	O C FISHER RESERVOIR MID LAKE 425 M WEST OF DAM RELEASE CONTROL 1	LC	UC	RT
6	15886	1421	NORTH CONCHO RIVER AT CADDO ST IN SAN ANGELO	LC	UC	BS
6	15886	1421	NORTH CONCHO RIVER AT CADDO ST IN SAN ANGELO	LC	UC	RT
7	17346	1423	SPRING CREEK AT LAKE AVENUE CROSSING IN MERTZON	LC	UC	RT
8	16903	1424	MIDDLE CONCHO RIVER AT FM853 NORTH OF MERTZON	LC	UC	RT
9	12165	1424	WEST ROCKY CREEK AT FM 853 43.4 KM/27 MI NORTHEAST OF MERTZON	LC	UC	RT
10	12166	1423	DOVE CREEK AT BRIDGE SE BOUND ON FM2335 NEAR KNICKERBOCKER	LC	UC	RT
11	12161	1423	SPRING CREEK S BANK 20 M DOWNSTREAM OF FM2335 NEAR TANKERSLEY	LC	UC	RT
12	18712	1424	SOUTH CONCHO RIVER 175 M DOWNSTREAM OF ANSON SPRING APPROXIMATE	LC	UC	RT
13	18711	1424	COLD CREEK 817 M UPSTREAM OF CONFLUENCE WITH SOUTH CONCHO RIVER	LC	UC	RT
14	12427	1424	SOUTH CONCHO RIVER IMMEDIATELY DOWNSTREAM OF US 277 AT CHRISTIAN	LC	UC	RT
15	12425	1423	TWIN BUTTES RESERVOIR SOUTH POOL RIVER CHANNEL NEAR DAM APPROXIMATE	LC	UC	RT
16	12422	1423	TWIN BUTTES RESERVOIR AT DAM 695 M SOUTH AND 195 M WEST OF INTAKE	LC	UC	RT
17	12421	1422	LAKE NASWORTHY MIDDLE COVE 120 M DOWNSTREAM OF CENTER POINT	LC	UC	RT
18	12419	1422	LAKE NASWORTHY IN RIVER CHANNEL IN SOUTH CONCHO ARM 880 M WEST	LC	UC	RT
19	12418	1422	LAKE NASWORTHY 40 M WEST OF DAM CENTERPOINT APPROX 1.3 KM TO T	LC	UC	RT
20	12416	1421	CONCHO RIVER SOUTH FORK AT US87	LC	UC	RT
21	12412	1421	NORTH CONCHO RIVER 20M UPSTREAM OF IRVING STREET DAM IN SAN ANGELO	LC	UC	BS
21	12412	1421	NORTH CONCHO RIVER 20M UPSTREAM OF IRVING STREET DAM IN SAN ANGELO	WC	FO	RT
22	12409	1421	CONCHO RIVER 235 M DOWNSTREAM OF S BELL ST AND 540 M DOWNSTREAM	LC	UC	BS
22	12409	1421	CONCHO RIVER 235 M DOWNSTREAM OF S BELL ST AND 540 M DOWNSTREAM	LC	UC	RT
23	12407	1421	CONCHO RIVER AT FM380 NEAR VERIBEST	LC	UC	RT
24	12403	1421	CONCHO RIVER AT FM1692 SOUTH OF MILES	LC	UC	RT
25	12402	1421	CONCHO RIVER AT FM381	LC	UC	RT
26	12254	1421	LIPAN CREEK APPROX 900M UPSTREAM OF THE CONFLUENCE OF THE CONCHO	LC	UC	RT
27	12257	1421	DRY HOLLOW CREEK AT HEADWATERS OF CHANDLER LAKE APPROXIMATE	LC	UC	RT
28	12255	1421	KICKAPOO CREEK AT FM 380	LC	UC	RT
29	12401	1421	CONCHO RIVER BRIDGE ON US83 AT PAINT ROCK	LC	UC	RT
30	12512	1433	O H IVIE RESERVOIR IN CONCHO RIVER ARM AT FM 1929	LC	UC	RT