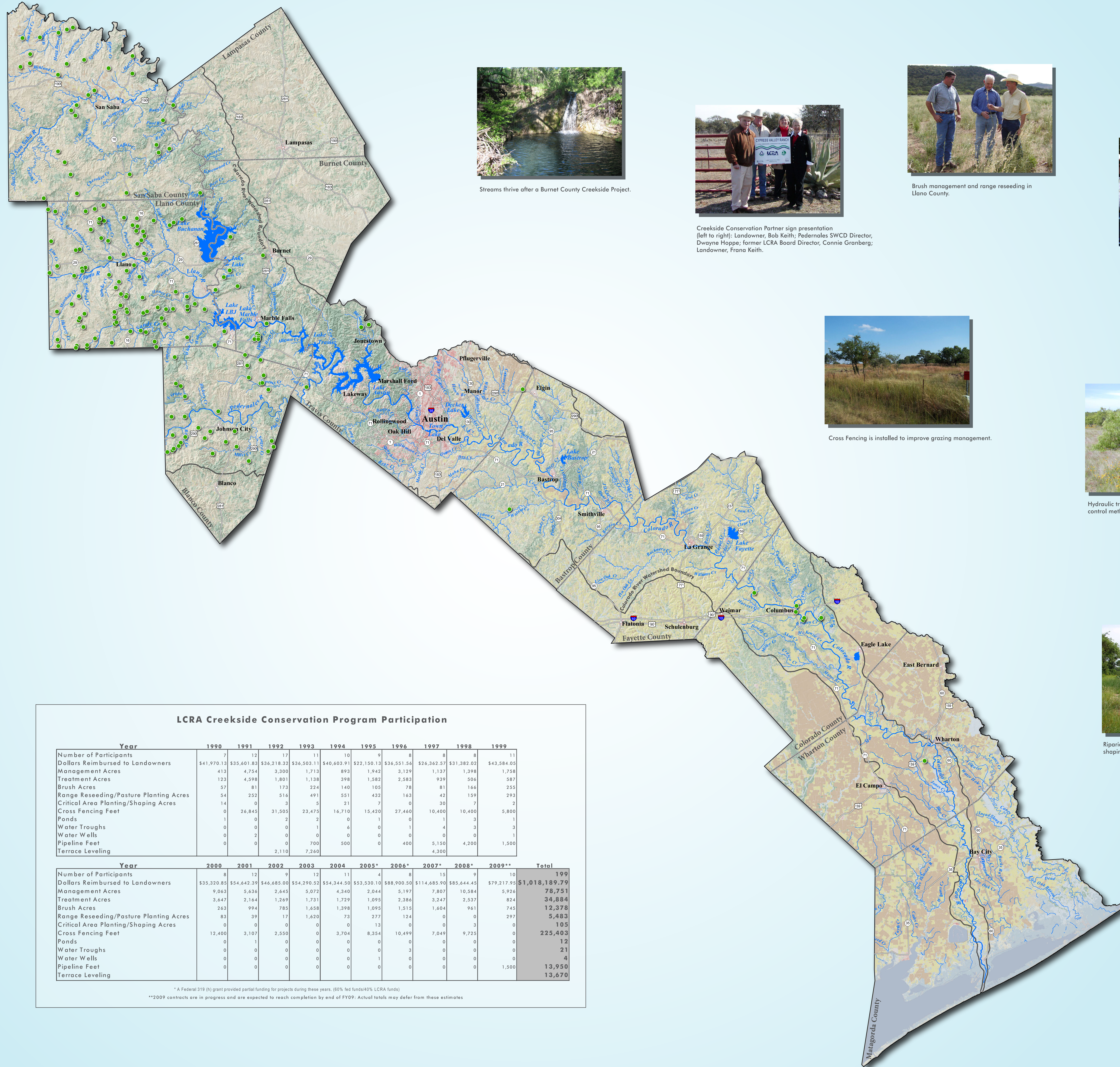


LCRA Creekside Conservation Program



LCRA has a rich history of working with landowners to conserve soil and water as shown in this 1948 Burnet County photo.



Streams thrive after a Burnet County Creekside Project.



Creekside Conservation Partner sign presentation (left to right): Landowner, Bob Keith; Padernales SWCD Director, Dwayne Hoppe; former LCRA Board Director, Connie Granberg; Landowner, Frana Keith.



Brush management and range reseeding in Llano County.



Landowners learn about the "pasture management stick" and the Creekside Project at field days and seminars.



Cross Fencing is installed to improve grazing management.



Hydraulic tree shearing has become a popular brush control method. Soil disturbance is minimized.



Riparian vegetation thrives following critical area shaping and pasture planting.

LCRA Creekside Conservation Program

LCRA was created in 1934 as a Texas conservation and reclamation district. Now decades later, LCRA remains dedicated to land stewardship through the Creekside Conservation Program. This program began in 1990 to help landowners retain soil and enhance land productivity. It benefits the entire river basin by reducing sedimentation of streams, lakes and water supply reservoirs and lessening degradation of water quality and aquatic habitat.



Natural Resources Conservation Service

The USDA Natural Resources Conservation Service (NRCS) is the federal agency that works hand-in-hand with the American people to conserve natural resources on private lands. NRCS is a valuable land stewardship partner in providing the technical service necessary to implement soil and water conservation plans. NRCS brings 60 years of scientific and technical expertise to the Partnership.



Soil and Water Conservation Districts

In the 1930's our country experienced some of the worst dust storms recorded in history. Protection of topsoil became a priority and as a result, soil and water conservation districts (SWCDs) were formed so landowners could work together at the local level to solve this major problem. SWCDs are the cornerstone of land stewardship throughout the lower Colorado River basin.



Federal 319 (h) Grant Augments the Creekside Conservation Program

In 2004, the LCRA Creekside Conservation Program was awarded a three-year, \$507,000 grant from the Texas State Soil and Water Conservation Board and the U.S. Environmental Protection Agency. In 2007, the TSSWCB approved another three-year grant totaling \$458,000. This funding enables more landowners to implement conservation practices on their land.



LCRA Creekside Conservation Program Participation

Year	1990	1991	1992	1993	1994	1995	1996	1997	1998	1999
Number of Participants	7	12	17	11	10	9	8	8	8	11
Dollars Reimbursed to Landowners	\$41,970.13	\$35,601.83	\$36,218.32	\$36,503.11	\$40,603.91	\$32,150.13	\$36,551.56	\$26,362.57	\$31,382.02	\$43,584.05
Management Acres	413	4,754	3,300	1,713	893	1,942	3,129	1,137	1,398	1,758
Treatment Acres	123	4,598	1,801	1,138	398	1,582	2,583	939	506	587
Brush Acres	57	81	173	224	140	105	78	81	164	255
Range Reseeding/Pasture Planting Acres	54	252	516	491	551	432	163	42	159	293
Critical Area Planting/Shaping Acres	14	0	3	5	21	7	0	30	7	2
Cross Fencing Feet	0	26,845	31,505	23,475	16,710	15,420	27,460	10,400	10,400	5,800
Ponds	1	0	2	2	0	1	0	1	3	1
Water Troughs	0	0	0	1	4	0	1	4	3	3
Water Wells	0	2	0	0	0	0	0	0	0	1
Pipeline Feet	0	0	0	700	500	0	400	5,150	4,200	1,500
Terrace Leveling	0	2,110	7,260	0	0	0	0	4,300	0	0

Year	2000	2001	2002	2003	2004	2005*	2006*	2007*	2008*	2009**	Total
Number of Participants	8	12	12	11	11	4	8	15	9	10	199
Dollars Reimbursed to Landowners	\$35,320.85	\$54,642.39	\$46,485.00	\$54,290.52	\$54,344.50	\$53,530.10	\$88,900.50	\$114,685.90	\$85,644.45	\$79,217.95	\$1,018,189.79
Management Acres	9,063	5,636	2,645	5,072	4,240	2,044	5,197	7,807	10,584	5,924	78,751
Treatment Acres	3,647	2,164	1,269	1,731	1,729	1,095	2,386	3,247	2,537	824	34,884
Brush Acres	263	994	785	1,658	1,398	1,095	1,515	1,404	961	745	12,378
Range Reseeding/Pasture Planting Acres	83	39	17	1,620	73	277	124	0	0	297	5,483
Critical Area Planting/Shaping Acres	0	0	0	0	0	13	0	0	0	0	105
Cross Fencing Feet	12,400	3,107	2,550	0	3,704	8,354	10,499	7,049	9,725	0	225,403
Ponds	0	1	0	0	0	0	0	0	0	0	12
Water Troughs	0	0	0	0	0	0	3	0	0	0	21
Water Wells	0	0	0	0	0	1	0	0	0	0	4
Pipeline Feet	0	0	0	0	0	0	0	0	0	1,500	13,950
Terrace Leveling	0	0	0	0	0	0	0	0	0	0	13,670

* A Federal 319 (h) grant provided partial funding for projects during these years. (66% fed funds/40% LCRA funds)
 **2009 contracts are in progress and are expected to reach completion by end of FY09. Actual totals may differ from these estimates.

