

LCRA Creekside Conservation Program Hill Country SWCD (Burnet and Lamparas Counties)



Standing Left to Right: HCSWCD Board Director, Travis Herring; NRCS District Conservationist, Rick Cantu; Directors Walter Barbee, Harlan Russell and Grady Gibson. Sitting: Director Ralph Whitman and District Technician, Diane Sand



The Creekside Conservation Program helps Burnet and Lamparas County landowners conserve soil and water, and increase springflow.



Landowners gather at the Kaffie Ranch for the 2006 Burnet County Land Stewardship Workshop.

LCRA Creekside Conservation Program

LCRA was created in 1934 as a Texas conservation and reclamation district. Now decades later, LCRA remains dedicated to land stewardship through the Creekside Conservation Program. This program began in 1990 to help landowners retain soil and enhance land productivity. It benefits the entire river basin by reducing sedimentation of streams, lakes and water supply reservoirs and lessening degradation of water quality and aquatic habitat.



Natural Resources Conservation Service

The USDA Natural Resources Conservation Service (NRCS) is the federal agency that works hand-in-hand with the American people to conserve natural resources on private lands. NRCS is a valuable land stewardship partner in Lamparas and Burnet counties, providing the technical service necessary to implement soil and water conservation plans. NRCS brings 60 years of scientific and technical expertise to the Partnership.



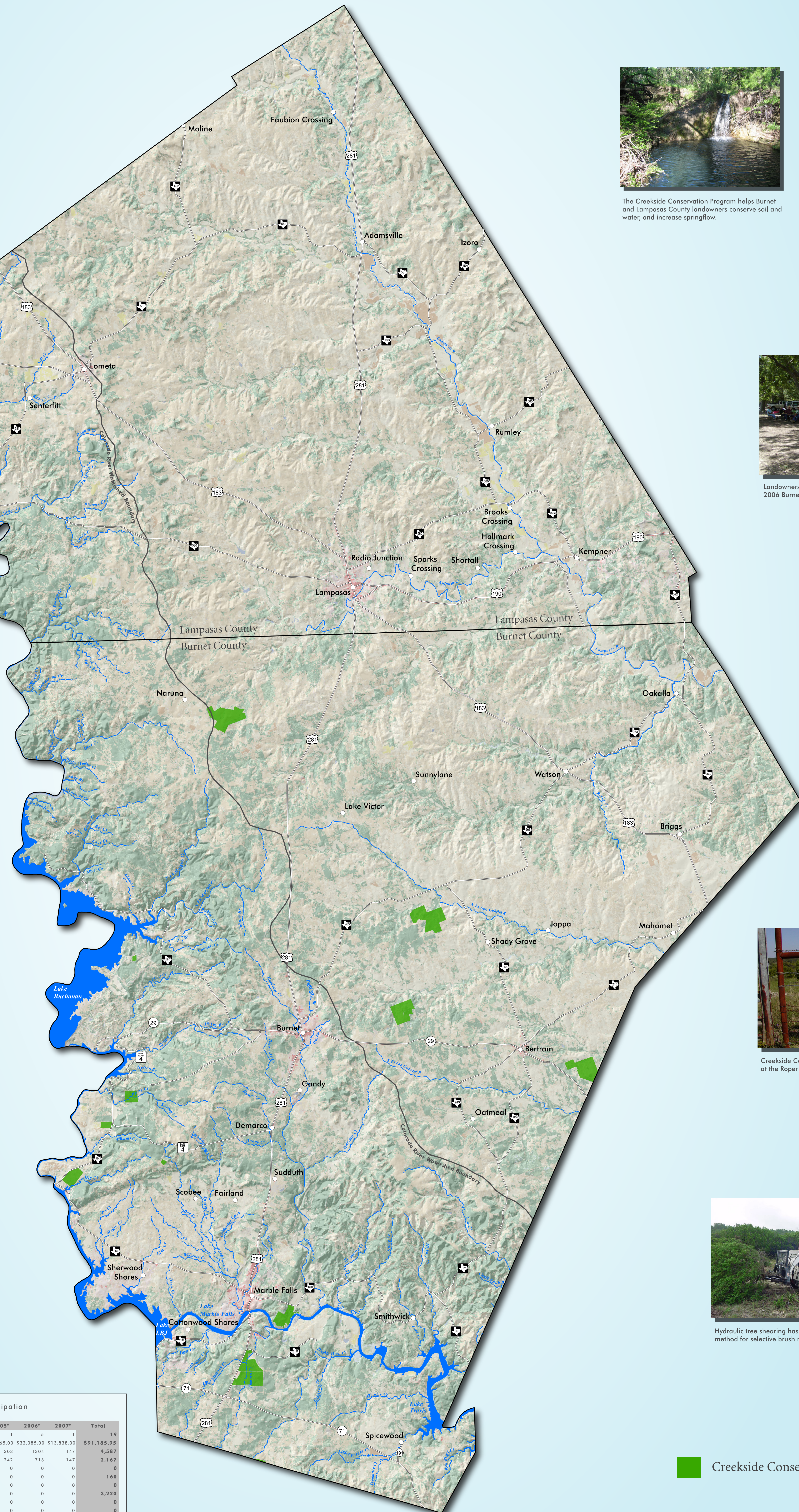
Hill Country Soil and Water Conservation District

In the 1930's our country experienced some of the worst dust storms recorded in history. Protection of topsoil became a priority and as a result, soil and water conservation districts (SWCDs) were formed so landowners could work together at the local level to solve this major problem. The Hill Country Soil and Water Conservation District is the cornerstone of land stewardship in Burnet and Lamparas Counties.



Federal 319 (h) Grant Augments the Creekside Conservation Program

In 2004, the LCRA Creekside Conservation Program was awarded a three-year, \$507,000 grant from the Texas State Soil and Water Conservation Board and the U.S. Environmental Protection Agency. In 2007, the TSSWCB approved another three-year grant totaling \$458,000. This funding enables more landowners to implement conservation practices on their land.



Creekside Conservation gate sign proudly displayed at the Roper Ranch in Burnet County



Hydraulic tree shearing has become a popular method for selective brush removal.

Creekside Conservation Program Properties

Hill Country SWCD: LCRA Creekside Conservation Program Participation										
Year	1995	1999	2000	2002	2003	2004	2005*	2006*	2007*	Total
Number of Participants	3	1	1	1	5	1	1	5	1	19
Dollars Reimbursed to Landowners	\$6,462.95	\$1,400.00	\$1,710.00	\$700.00	\$23,062.50	\$4,062.50	\$7,865.00	\$32,085.00	\$13,838.00	\$91,185.95
Management Acres	255	211	20	35	2187	125	303	1304	147	4,587
Brush Acres	35	70	20	35	780	125	242	713	147	2,167
Range Reseeding Acres	0	0	0	0	0	0	0	0	0	0
Pasture Planting Acres	140	0	20	0	0	0	0	0	0	160
Critical Area Planting/Sheeping Acres	0	0	0	0	0	0	0	0	0	0
Cross Fencing Feet	3220	0	0	0	0	0	0	0	0	3,220
Funds	0	0	0	0	0	0	0	0	0	0
Water Troughs	0	0	0	0	0	0	0	0	0	0
Pipeline Feet	0	0	0	0	0	0	0	0	0	0

* A Federal 319 (h) grant provided partial funding for projects during these years.

