

LCRA Creekside Conservation Program Llano County



Directors John Little and Steve Haverlah using the "pasture stick" at the 2005 Beef and Range Field Day.



Director Harold Goehmann distributes water at the 2006 Beef and Range Field Day.



After much preparation, Mary Lou can finally take a break at the 2005 Beef and Range Field Day.

LCRA Creekside Conservation Program

LCRA was created in 1934 as a Texas conservation and reclamation district. Now decades later, LCRA remains dedicated to land stewardship through the Creekside Conservation Program. This program began in 1990 to help landowners retain soil and enhance land productivity. It benefits the entire river basin by reducing sedimentation of streams, lakes and water supply reservoirs and lessening degradation of water quality and aquatic habitat.



Natural Resources Conservation Service

The USDA Natural Resources Conservation Service (NRCS) is the federal agency that works hand-in-hand with the American people to conserve natural resources on private lands. NRCS is a valuable land stewardship partner in Llano County, providing the technical service necessary to implement soil and water conservation plans. NRCS brings 60 years of scientific and technical expertise to the Partnership.



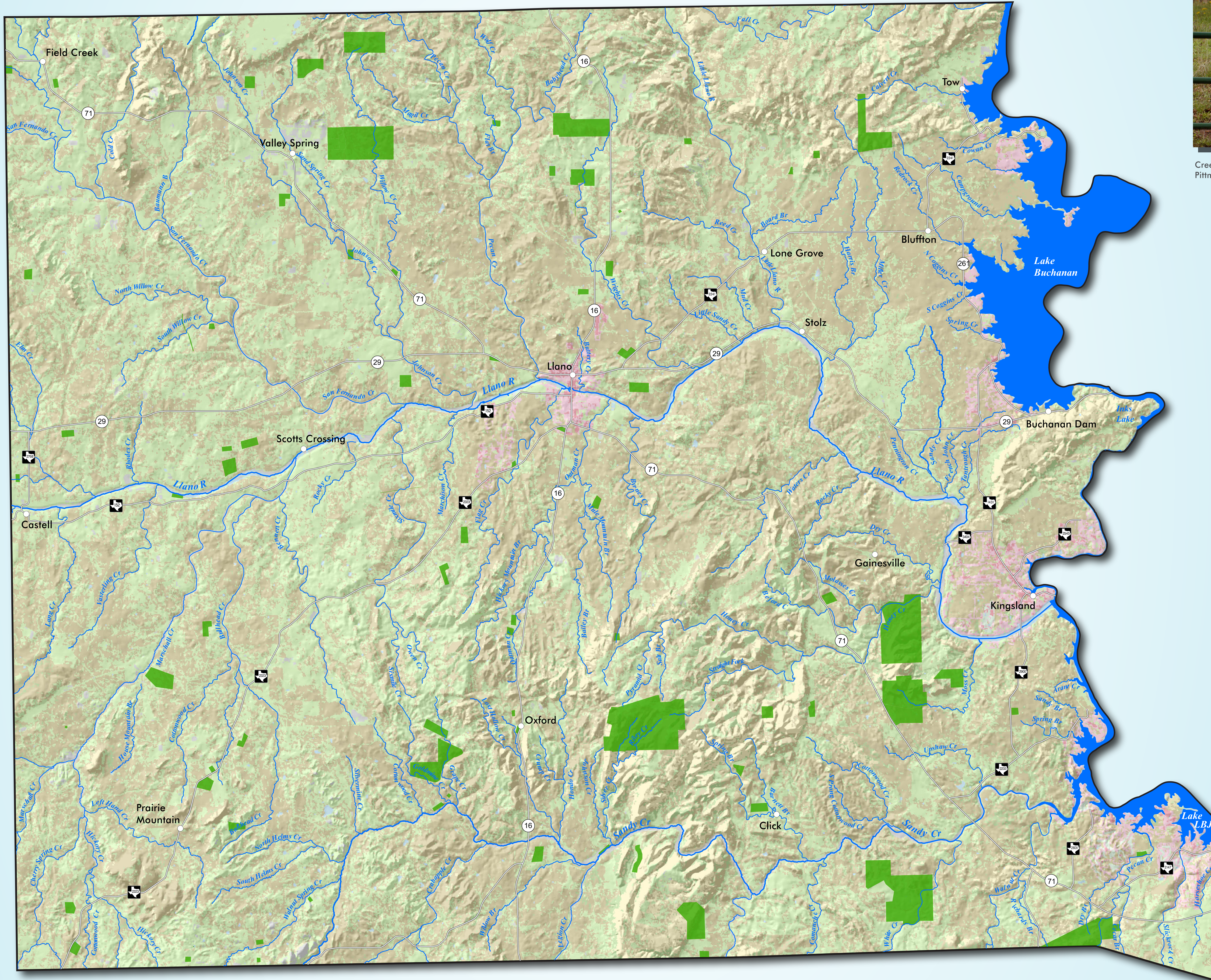
Llano County Soil and Water Conservation District

In the 1930's our country experienced some of the worst dust storms recorded in history. Protection of topsoil became a priority and as a result, soil and water conservation districts (SWCDs) were formed so landowners could work together at the local level to solve this major problem. The Llano County Soil and Water Conservation District is the cornerstone of land stewardship in Llano County.



Federal 319 (b) Grant Augments the Creekside Conservation Program

In 2004, the LCRA Creekside Conservation Program was awarded a three-year, \$307,000 grant from the Texas State Soil and Water Conservation Board and the U.S. Environmental Protection Agency. In 2007, the TSSWCB approved another three-year grant totaling \$458,000. This funding enables more landowners to implement conservation practices on their land.



Creekside gate sign proudly displayed at the Les Pittman Ranch.



Left to Right: Llano SWCD Director Johnny Sawyer, Director Harold Goehmann, Director Tom Ball, District Secretary Mary Lou Smothers, NRCS District Conservationist Fred Reyna, Director Steve Haverlah.



Llano County NRCS District Conservationist Randy Ward (straw hat) provides conservation guidance to Ligon Family Ranch partners Alan (left) and David Hardison.



Tree Shearing has become a popular method of selective brush control in Llano County.

Llano County SWCD: LCRA Creekside Conservation Program Participation										
Year	1990	1991	1992	1993	1994	1995	1996	1997	1998	
Number of Participants	7	2	2	2	3	5	5	0	1	2
Dollars Reimbursed to Landowners	\$41,970.13	\$12,880.61	\$17,425.99	\$32,389.71	\$26,725.32	\$13,458.13	\$23,206.03	\$21,000.76	\$11,184.47	
Management Acres	413	4,600	1,829	1,458	420	1,501	2,822	982	89	
Brush Acres	84	0	68	286	75	65	60	48	0	
Range Reseeding Acres	8	35	77	122	74	0	14	0	0	
Fauna Planting Acres	46	120	93	121	263	144	149	64	74	
Critical Area Planting/Shaping Acres	14	0	0	0	20	0	0	0	30	
Cross Fencing Feet	0	26,845	15,105	18,925	14,780	8,050	27,460	7,700	5,000	
Fends	1	0	1	1	0	1	0	1	0	
Water Troughs	0	0	0	0	6	0	1	4	2	
Water Walls	0	1	0	0	0	0	0	0	0	
Pipeline Feet	0	0	0	0	500	0	400	5,150	1,000	
Year	1999	2000	2001	2002	2003	2004	2005	2006	2007	Total
Number of Participants	7	2	2	2	3	5	5	0	1	92
Dollars Reimbursed to Landowners	\$8,804.42	\$9,184.85	\$15,407.89	\$16,950.00	\$18,140.00	\$8,568.00	\$91,462.00	\$72,756.00	\$15,078.00	\$466,800.21
Management Acres	388	5,841	3,582	2,245	2,022	1,021	4,599	11,024	557	45,403
Brush Acres	23	0	308	350	172	172	775	889	347	3,722
Range Reseeding Acres	67	0	19	0	0	0	74	127	0	646
Fauna Planting Acres	26	0	0	17	0	0	203	0	0	1,277
Critical Area Planting/Shaping Acres	11	0	0	0	0	0	0	0	0	65
Cross Fencing Feet	0	12,400	0	2,550	0	0	8,354	8,761	0	155,930
Fends	0	0	0	0	0	0	0	0	0	5
Water Troughs	0	0	0	0	0	0	0	3	0	16
Water Walls	0	0	0	0	0	0	1	0	0	2
Pipeline Feet	0	0	0	0	0	0	0	0	0	0

* A Federal 319 (b) grant provided partial funding for projects during these years.

Creekside Conservation Program Properties

