










WATERWAY MARKING SYSTEM

 <p>BOATS KEEP OUT Nature of danger may be placed outside crossed diamond, e.g. waterfalls, swim areas or rapids.</p>	 <p>OBSTRUCTION MARKER Cardinal buoyage marking system. Do not pass between shore and buoy.</p>
 <p>DANGER! Nature of danger may be indicated inside the diamond shape, e.g. rocks, reefs, dams, construction or snags.</p>	 <p>CHANNEL MARKER Lateral system. Keep buoy on left facing upstream.</p>
 <p>CAUTION! Controlled area as indicated in circle, e.g. speed limit, no fishing, no anchoring, ski only, slow — no wake, no ski or no prop boats.</p>	 <p>MOORING BUOY White with reflectorized blue band. May have white light or reflector.</p>
 <p>INFORMATION Tells directions, distances, places, food, repairs, supplies and other nonregulatory messages.</p>	 <p>CHANNEL MARKER Lateral system. Keep buoy on right facing upstream.</p>
 <p>DIVER DOWN FLAG Boaters exercise caution. Alpha flag is required by Federal law to be displayed by vessels engaged in diving operations. The divers flag is not an official flag but is used widely by recreational divers.</p>	 <p>Alpha Flag</p>

BOATING INFORMATION

Weather Radio Warnings
Tune to radio dial 1610 AM or 162.40 megahertz (MHz) on a VHF radio for weather condition updates.

Lake Patrols
LCRA Rangers patrol the Highland Lakes and parks in conjunction with Texas Parks and Wildlife Department game wardens and county sheriff's deputies. These law enforcement groups are authorized to issue citations and make arrests.

Safe Boating Tips

- Watch for changes in water color, which may indicate shallow water or submerged hazards.
- Remember water is deep on the cliff side of the lake and shallow on the side sloping down to the water.
- Approach the waves of other boats at a 45-degree angle to keep the propeller under water and to reduce pounding.
- Head into the wind during inclement weather. It is the most seaworthy position for most small boats.
- Don't operate a boat while intoxicated. It is against state law.

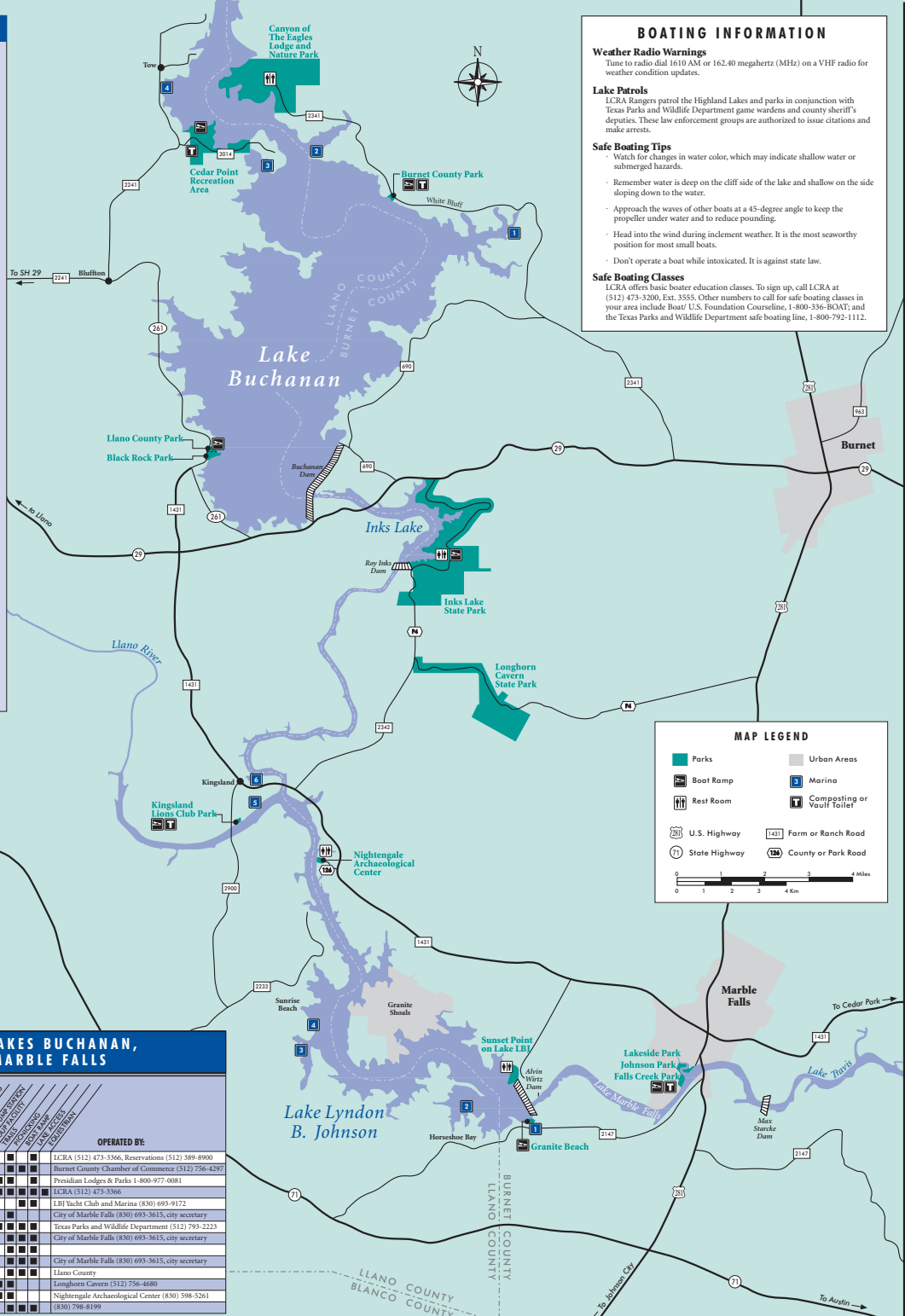
Safe Boating Classes
LCRA offers basic boater education classes. To sign up, call LCRA at (512) 473-3200, Ext. 3555. Other numbers to call for safe boating classes in your area include Boat/ U.S. Foundation Courseline, 1-800-336-BOMI; and the Texas Parks and Wildlife Department safe boating line, 1-800-792-1112.

PUBLIC MARINA FACILITIES

LAKE BUCHANAN	LAKE LBJ	LAKE MARBLE FALLS
1. Thunderbird Lodge and Resort	1. LBJ Yacht Club and Marina	
2. Silver Creek Fishing Lodge	2. Horseshoe Bay Resort Marina	
3. Paradise Point	3. Sunrise Beach Marina	
4. Alexander Boat Dock	4. Sandyland Resort	
	5. Rio Vista Resort	
	6. Riverbend Marina and Storage	

PUBLIC PARKS ON LAKES BUCHANAN, INKS, LBJ AND MARBLE FALLS

PARK NAME	OPERATED BY									
	LCRA	BURNET COUNTY	MARBLE FALLS CITY	JOHNSON CITY	LONGHORN COVERS	NIGHTINGALE	THUNDERBIRD	SUNRISE BEACH	ALBION WIREZ	GRANITE BEACH
Black Rock Park	●									
Burnet County (White Bluff)		●								
Canyon of The Eagles Lodge and Nature Park										
Cedar Point Recreation Area										
Granite Beach										
Falls Creek Park										
Inks Lake State Park										
Johnson Park										
Kingsland Lions Club Park										
Lakeside Park										
Llano County Park										
Longhorn Cavern State Park										
Nightingale Archeological Center										
Sunset Point on Lake LBJ										



MAP LEGEND

Parks	Urban Areas
Boat Ramp	Marina
Rest Room	Composting or Gault Toilet
U.S. Highway	Farm or Ranch Road
State Highway	County or Park Road

0 1 2 3 4 Miles
0 1 2 3 4 Km